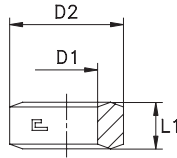


## SEALING WASHER

Gauge fitting – Adjustable elbow  
Thread BSP Parallel - Thread Metric Parallel

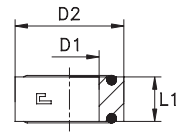
Type: 1084..



## O-RING SEALING WASHER

Gauge fitting  
Thread BSP Parallel

Type: 1085..



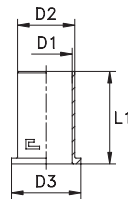
Series DIN	10.... [bar]	11.... [bar]	Ordering Complete	D1	D2	L1	Thread	Applications
L/S	-	-	108401	6	11	4,5	G 1/4	Gauge fitting 1059..
			108402	9	18	5	G 1/2	Gauge fitting 1059..
			108411	9,8	14,5	3	G 1/8	Adjustable elbow 1013..
			108412	13,3	18	3	G 1/4	Adjustable elbow 1013..
			108413	16,8	22	3	G 3/8	Adjustable elbow 1013..
			108414	21,1	26	4	G 1/2	Adjustable elbow 1013..
			108415	26,5	32	4	G 3/4	Adjustable elbow 1013..
			108421	8,1	12,5	3	M 8x1	Adjustable elbow 1014..
			108422	10,1	14,5	3	M 10x1	Adjustable elbow 1014..
			108423	12,1	17	3	M 12x1,5	Adjustable elbow 1014..
			108424	14,1	19	3	M 14x1,5	Adjustable elbow 1014..
			108425	16,1	21	3	M 16x1,5	Adjustable elbow 1014..
			108426	18,1	23	3	M 18x1,5	Adjustable elbow 1014..
			108427	20,1	25	4	M 20x1,5	Adjustable elbow 1014..
108428	22,1	27	4	M 22x1,5	Adjustable elbow 1014..			
108429	26,1	32	4	M 26x1,5	Adjustable elbow 1014..			
108430	27,1	32	4	M 27x2	Adjustable elbow 1014..			
L/S	-	-	108501	6	11	4,5	1/4	Gauge fitting 1059...4
			108502	9	18	5	1/2	Gauge fitting 1059...4

**Note:** If you wish to order a fitting in stainless steel, please change the first two digit from 10.... to 11.... .  
Items not included in the ISO 8434-1 Norm.

## PIPE INSERT

Thin wall pipe

Type: 1086..



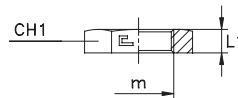
Series DIN	10.... [bar]	11.... [bar]	Ordering Complete	Ø Tube	D1	D2	D3	L1
L/S	-	-	108601	6	3	3,9	6	11
			108602	8	5	5,9	8	14
			108603	10	7	7,9	10	15
			108604	12	9	9,9	12	16
			108605	15	12	12,9	15	17
			108606	18	14	14,9	18	20
			108607	20	15	15,9	20	20
			108608	22	16	17,9	22	20
			108609	28	22	23,9	28	23,5
			108610	30	24	25,9	30	23,5
			108611	35	28	30,9	35	26,5

**Note:** If you wish to order a fitting in stainless steel, please change the first two digit from 10.... to 11.... .  
Items not included in the ISO 8434-1 Norm.

## EXAGONAL NUT

Bulkhead fitting

Type: 1087..



Series DIN	10.... [bar]	11.... [bar]	Ordering Complete	m	L1	CH1	Ø Tube	Ø Tube
L/S	-	-	108704	12x1,5	6	17	6L	-
			108705	14x1,5	6	19	8L	6S
			108706	16x1,5	6	22	10L	8S
			108707	18x1,5	6	24	12L	10S
			108708	20x1,5	6	27	-	12S
			108709	22x1,5	7	30	15L	14S
			108710	24x1,5	7	32	-	16S
			108711	26x1,5	8	36	18L	-
			108712	30x2	8	41	22L	20S
			108713	36x2	9	46	28L	25S
			108714	42x2	9	50	-	30S
			108715	45x2	9	55	35L	-
			108716	52x2	10	65	42L	38S

**Note:** If you wish to order a fitting in stainless steel, please change the first two digit from 10.... to 11.... .