



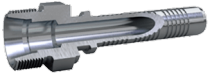
TRANSFER OIL

Pure Fluid Attitude



SOI - VHP CEL MALE

MALE CEL DIN 24° VHP



| Carbon steel Part no | AISI 316L part no | Description | Minimum pack quantity | Hose size | Thread F | |
|----------------------|-------------------|-------------------------|-----------------------|-----------|----------|--------|
| SOI132 | SOI832 | 14X1.5 M-CEL VHP C 1/4 | 20 | DN6 | 1/4 | 14X1.5 |
| SOI143 | SOI843 | 16X1.5 M-CEL VHP C 5/16 | 20 | DN8 | 5/16 | 16X1.5 |
| SOI154 | SOI854 | 18X1.5 M-CEL VHP C 3/8 | 20 | DN10 | 3/8 | 18X1.5 |
| SOI175 | SOI875 | 22X1.5 M-CEL VHP C 1/2 | 20 | DN12 | 1/2 | 22X1.5 |
| SOI1F7 | SOI8F7 | 30X2 M-CEL VHP C 3/4 | 20 | DN20 | 3/4 | 30X2 |
| SOI1G8 | SOI8G8 | 36X2 M-CEL VHP C 1 | 20 | DN25 | 1 | 36X2 |

Dimensions and values shown may be changed without prior notice to improve product performances and reliability.

Transfer Oil S.p.A. assumes no liability on mistakes nor errors appearing in this spec sheet.

Document date: 12/02/2025

www.transferoil.com