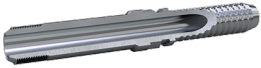




## HL - Male MP



Part no.	Description	Minimum pack quantity	Insert tail ID mm	Thread F	Hose size	HEX-CH	HEX-CH	WP (psi)	Hoses
HLB142	3/8 M-MP B 1/4	0	4	3/8-24 UNF LH	DN6	1/4	0	22500	2022, 2032
HLB842	3/8 M-MP B 1/4 SS	0	4	3/8-24 UNF LH	DN6	1/4	0	22500	2022, 2032
HLC841	3/8 M-MP C 3/16 SS	0	3.5	3/8-24 UNF LH	DN6	3/16	0	22500	2041
HLC842	3/8 M-MP C 1/4 SS	0	3.5	3/8-24 UNF LH	DN6	1/4	0	22500	2042
HLC1B3	9/16 M-MP C/B 5/16	10	4.5	9/16-18 UNF LH	DN8	5/16	0	22500	2033, 2043
HLC173	3/4 M-MP C/B 5/16	10	4.5	3/4-16 UNF LH	DN8	5/16	0	22500	2033, 2043
HLC873	3/4 M-MP C/B 5/16 SS	10	4.5	3/4-16 UNF LH	DN8	5/16	0	22500	2033, 2043
HLK8B3	9/16 M-MP TO BLAST 5/16 SS	0	5	9/16-18 UNF LH	DN8	5/16	15	22500	2043
HLF873	3/4 M-MP F/E 5/16 SS	10	4.5	3/4-16 UNF LH	DN8	5/16	0	22500	2063, 2363, 2163
HLI873	3/4 M-MP I/H 5/16 SS	10	4.5	3/4-16 UNF LH	DN8	5/16	0	22500	2263
HLK8B4	9/16 M-MP LH TO BLAST 3/8 SS	0	6.5	9/16-18 UNF LH	DN10	3/8	17	22500	2044
HLA8B5	9/16 M-MP A 1/2 SS	10	8.5	9/16-18 UNF LH	DN12	1/2	0	22500	2025
HLG8B5	9/16 M-MP G/D/C/B 1/2 SS	10	7.5	9/16-18 UNF LH	DN12	1/2	0	22500	2245, 2035, 2045, 2055, 2145
HLG875	3/4 M-MP G/D/C/B 1/2 SS	10	7.5	3/4-16 UNF LH	DN12	1/2	0	22500	2245, 2035, 2045, 2055, 2145
HLF8B5	9/16 M-MP F/E 1/2 SS	10	7.5	9/16-18 UNF LH	DN12	1/2	0	22500	2065, 2165
HLF875	3/4 M-MP F/E 1/2 SS	10	7.5	3/4-16 UNF LH	DN12	1/2	0	22500	2065, 2165
HLE887	1 M-MP E/G/C/B/A 3/4 SS	4	13	1-14 UNS LH	DN20	3/4	0	22500	2047, 2057, 2067, 2037
HLE888	1 M-MP E 1 SS	4	17.5	1-14 UNS LH	DN25	1	0	20000	2068

Dimensions and values shown may be changed without prior notice to improve product performances and reliability.

Transfer Oil S.p.A. assumes no liability on mistakes nor errors appearing in this spec sheet.

Document date: 12/02/2025

[www.transferoil.com](http://www.transferoil.com)